



evonicfires
quality electric fires built in britain

suites | insets | wall mounted

2017/18

Welcome to the 2017/18 **evonicfires** brochure.

evonicfires is a brand of CK Fires Ltd. Situated just outside of Stratford-upon-Avon, the birthplace of William Shakespeare.

Steeped in culture and history it is set in the beautiful rural Warwickshire countryside, on the banks of the river Avon.

Our fires come with a choice of flame picture, low energy LED or latest award winning LED super realistic **evoflame®**, now available on most of our appliances and is identified throughout the brochure by the **evoflame®** logo.

evoflame® is available with an optional multi-functional remote or **e-touch®** control system that allows you complete control of the fire or suite from the comfort of your armchair.



suites

4 - 22

asterix	3	empire II	13
sigma	4	cassini	14
omega	5	corbiere	15
helios	6	midori	16
nimbus	7	ohio 600	17
qube	8	ohio 700	18
newark	9	ohio 1000	19
newark 1000	10	broadway	20
compton 1000	11	westfield	21
compton II	12		



inset fires & stoves

23 - 43

staton	22	phantom	33
detroit	23	seraph	34
memphis	24	saphir	35
nebraska	25	amathus	36
colorado	26	tiago	37
kansas	27	casal	38
iowa	28	londa	39
brooklyn	29	scala	40
fusion	30	kepler22	41
harlem	31	banff3	42
albany	32	e-touch	43

suites

asterix

- 495mm evoflame® effect
- e-touch® control unit
- 1 & 2kW heat outputs
- glass side & front panels
- choice of silver birch or woodland ceramic log set
- square brushed satin steel canopy
- illuminated side feature panels
- polished steel hearth riser
- optional extra feature of evoflame ultra hd® including SCHOTT CONTURAN® MAGIC anti - reflective front & side glass



evoflame®
technology

for technical specifications please refer to page 46



shown in satin stainless with polished chrome hearth riser

sigma

- 495mm **evoflame®** effect
- **e-touch®** control unit
- 1 & 2kW heat outputs
- glass side & front panels
- choice of silver birch or woodland ceramic log set
- curved brushed satin steel canopy
- illuminated side feature panels
- polished steel hearth riser
- optional extra feature of

evoflame ultra hd® including

SCHOTT CONTURAN® MAGIC

anti - reflective front & side glass

evoflame®
technology

for technical specifications please refer to page 46

omega

- 800mm evoflame ultra hd® effect
- 1 & 2kW heat outputs
- e-touch® control unit
- SCHOTT CONTURAN® MAGIC anti - reflective front & side glass
- choice of silver birch or woodland log set
- illuminated side feature panel
- colour options of white, whitestone, beige or beigestone

evoflame®
ULTRAHD

for technical specifications please refer to page 46



shown in white with satin stainless feature panel



shown in white with **evoflame®** effect

helios

- 495mm **evoflame®** effect
- **e-touch®** control unit
- 1 & 2kW heat outputs
- glass side & front panels
- choice of silver birch or woodland ceramic log set
- illuminated side feature panel
- optional extra feature of

evoflame ultra hd® including

SCHOTT CONTURAN® MAGIC

anti - reflective front & side glass
colour options of white,
whitestone, beige or beigestone

evoflame®
technology

for technical specifications please refer to page 46

nimbus

- 640mm evoflame® effect
- e-touch® control unit
- 1 & 2kW heat outputs
- side glass panels
- feature side lighting
- choice of silver birch or woodland ceramic log set
- colour options of white & oak or black & grey oak



evoflame®
technology

for technical specifications please refer to page 46





shown left handed with optional ceramic dish and log set

qube

- 640mm evoflame® effect
- e-touch® control unit
- 1 & 2kW heat outputs
- bottom mounted heater
- glass side panel
- ceramic log set
- tri-colour finish
- available right or left handed
- optional ceramic dish



for technical specifications please refer to page 46

newark 2

- 640mm evoflame® effect
- e-touch® control unit
- 1 & 2kW heat outputs
- glass side panel
- decorative ceramic tile
- feature side lighting
- choice of silver birch and woodland ceramic log set
- available right or left handed
- colour options of white, whitestone, beige or beigestone

design registration numbers
4024832 - 4035514



grey tile option

beige tile option

evoflame®
technology



left handed with grey tile shown with optional log set



left handed white option with **evoflame®** 1000mm effect and grey tile

newark 1000

- 1000mm **evoflame®** effect
- **e-touch®** control unit
- 1 & 2kW heat outputs
- glass side panel
- decorative ceramic tile
- feature side lighting
- choice of silver birch or woodland log set
- colour options of white, whitestone, beige or beigestone

design registration numbers
4024832 - 4035514



grey tile option

beige tile option

evoflame®
technology

for technical specifications please refer to page 46

compton 1000

- 1000mm **evoflame®** effect
- **e-touch®** control unit
- 1 & 2kW heat outputs
- glass side panel
- decorative ceramic tiles
- feature side lighting
- choice of silver birch or woodland log set
- colour options of white, whitestone, beige or beigestone

design registration number
4035514



grey tile option

beige tile option

evoflame®
technology

for technical specifications please refer to page 46



shown in white with **evoflame®** 1000mm effect and grey tile option



shown in white with **evoflame®** effect with grey tile

compton 2

- 640mm **evoflame®** effect
- **e-touch®** control unit
- 1 & 2kW heat outputs
- glass side panel
- decorative ceramic tiles
- feature side lighting
- choice of silver birch or woodland log set
- colour options of white, whitestone, beige or beigestone

design registration number 4035514



grey tile option

beige tile option

evoflame®
technology

for technical specifications please refer to page 46

empire 2

- 640mm evoflame® effect
- e-touch® control unit
- 1 & 2kW heat outputs
- glass side panel
- decorative ceramic tiles
- feature side lighting
- choice of silver birch or woodland log set
- colour options of white, whitestone, beige or beigestone

design registration number 4035514



grey tile option

beige tile option

evoflame®
technology

for technical specifications please refer to page 46





cassini

- 495mm **evoflame®** effect
- **e-touch®** control unit
- 1 & 2kW heat outputs
- glass side & front panels
- choice of silver birch or woodland ceramic log set
- colour options of white, whitestone, beige or beigestone
- optional extra feature of **evoflame ultra hd®** including **SCHOTT CONTURAN® MAGIC** anti - reflective front & side glass

evoflame®
technology

for technical specifications please refer to page 46

corbiere

- 640mm evoflame® effect
- e-touch® control unit
- 1 & 2kW heat outputs
- choice of silver birch or woodland log set
- frameless design
- colour options of white, whitestone, beige or beigestone

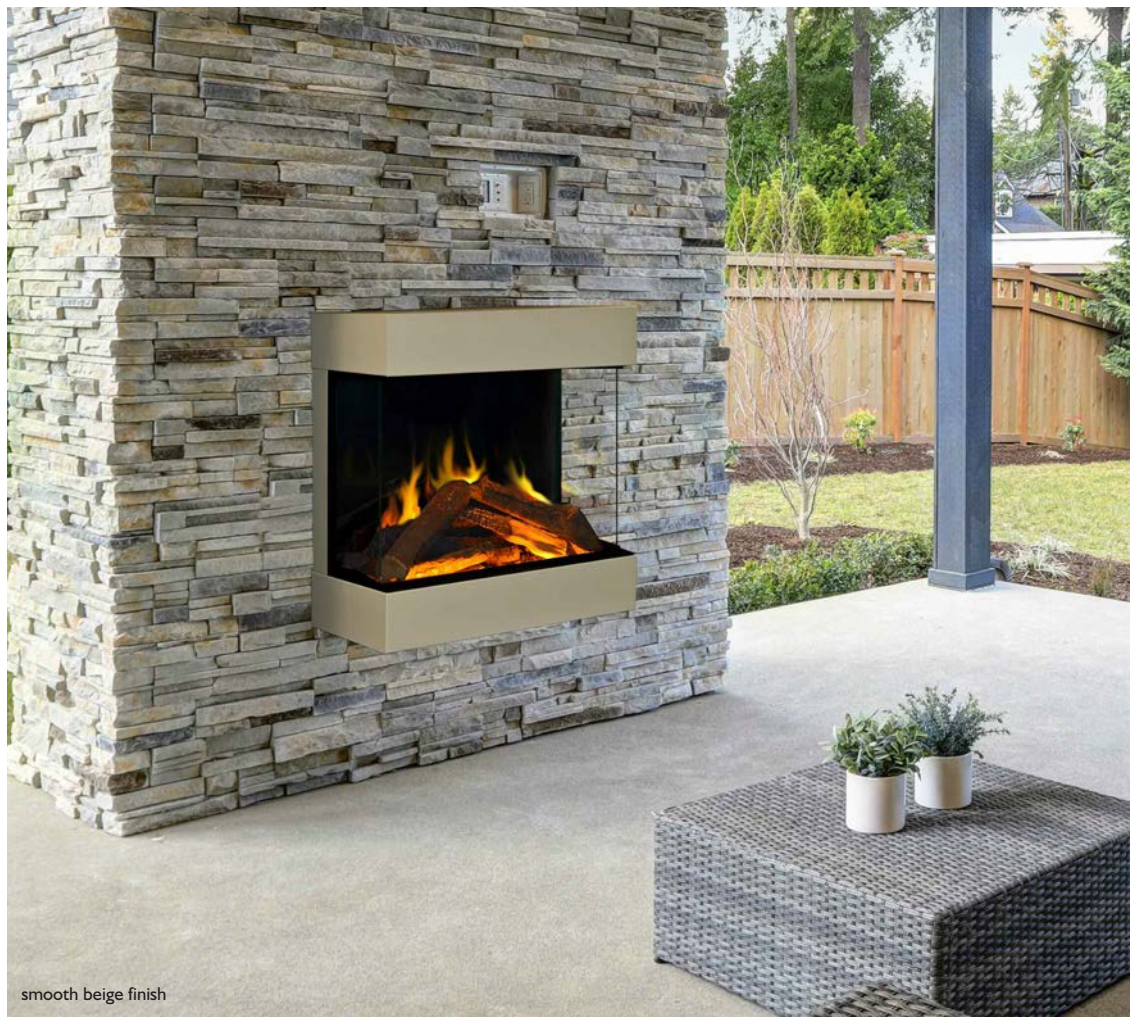


evoflame®
technology

for technical specifications please refer to page 46



shown in white with whitestone inlay & hearth



smooth beige finish

midori

- 495mm **evoflame®** effect
- **e-touch®** control unit
- 1 & 2kW heat outputs
- glass side & front panels
- choice of silver birch or woodland ceramic log set
- colour options of smooth beige or textured black
- optional extra feature of **evoflame ultra hd®** including **SCHOTT CONTURAN® MAGIC** anti - reflective front & side glass



textured black finish

evoflame®
technology

for technical specifications please refer to page 46

ohio 600

- 640mm **evoflame®** effect
- **e-touch®** control unit
- 1 & 2kW heat outputs
- choice of silver birch or woodland ceramic log set
- frameless design
- colour options of white, whitestone, beige, beigestone or black



evoflame®
technology

for technical specifications please refer to page 46



shown in white with beigestone inlay & hearth



shown in white with black inlay & hearth

ohio 700

- 640mm evoflame® effect
- e-touch® control unit
- 1 & 2kW heat outputs
- choice of silver birch or woodland ceramic log set
- frameless design
- colour options of white, whitestone, beige, beigestone or black

evoflame®
technology

for technical specifications please refer to page 46

ohio 1000

- 1000mm evoflame® effect
- e-touch® control unit
- 1 & 2kW heat outputs
- choice of silver birch or woodland ceramic log set
- frameless design
- colour options of white, whitestone, beige, beigestone or black

evoflame®
technology

for technical specifications please refer to page 46



shown in white with whitestone inlay & hearth



broadway

- 1000mm evoflame® effect
- e-touch® control unit
- 1 & 2kW heat outputs
- glass side panels
- optional TV unit & legs
- choice of silver birch or woodland ceramic log set
- colour options of white, whitestone, beige or beigestone

design registration number 4035514



standard broadway

evoflame[®]
technology

for technical specifications please refer to page 46

westfield

- 640mm evoflame® effect
 - e-touch® control unit
 - 1 & 2kW heat outputs
 - bottom mounted heater
 - decorative ceramic tiles
 - glass side panels
 - feature side lighting
- colour options of white, whitestone, beige or beigestone

design registration number 4035514



grey tile option

beige tile option

evoflame®
technology

for technical specifications please refer to page 46



shown in white with grey tile and optional log fuel bed



inset fires

station

- **evo flame®** effect
- 1500W & 750W heat outputs
- side switch controls
- concealed top heater
- full satin stainless construction
- hot ash effect fuel bed
- ceramic log set

refer to page 44 -45 for the full list of options



side mounted switch controls

evo flame®
technology

for technical specifications please refer to page 47

detroit

- **evoflame®** effect
- 1500W & 750W heat outputs
- side switch controls
- glass fronted
- hot ash effect fuel bed
- ceramic log set
- concealed top heater
- available in black or satin stainless

refer to page 44 - 45 for the full list of options



side mounted switch controls

evoflame®
technology

for technical specifications please refer to page 47





shown in nickel black



chrome



brass



bronze

memphis

- **evoflame®** effect
- 1500W & 750W heat outputs
- glass fronted
- ceramic log set
- side switch controls
- concealed top heater
- cast frame & ashpan
- available in nickel black, chrome, brass or bronze

refer to page 44 - 45 for the full list of options



side mounted switch controls

evoflame®
technology

for technical specifications please refer to page 47

nebraska

- evoflame® effect
- 1500W & 750W heat outputs
- glass fronted
- ceramic log set
- side switch controls
- concealed top heater
- available in two tone black & brass

refer to page 44 - 45 or the full list of options



side mounted switch controls

evoflame®
technology

for technical specifications please refer to page 47



shown in two tone black & brass



colorado

- **evoflame®** effect
- 1500W & 750W heat outputs
- glass fronted
- ceramic log set
- side switch controls
- concealed top heater
- available in two tone chrome, black and brass finishes

refer to page 44 -45 for the full list of options



evoflame®
technology

for technical specifications please refer to page 47

kansas

- **evoflame®** effect
 - 1500W & 750W heat outputs
 - ceramic log set
 - side switch controls
 - concealed top heater
 - cast frame & ashpan
- available in nickel black, chrome, brass or bronze

refer to page 44 -45 for the full list of options



side mounted switch controls



nickel black



brass



bronze



shown in chrome

evoflame®
technology

for technical specifications please refer to page 47



shown in satin chrome

iowa

- **evoflame®** effect
- 1500W & 750W heat outputs
- side switch controls
- ceramic log set
- concealed top heater
- satin chrome finish

refer to page 44 - 45 for the full list of options



side mounted switch controls

evoflame®
technology

for technical specifications please refer to page 47

brooklyn

- **evoflame®** or LED effect
- 1 & 2kW heat outputs
- optional stainless steel spacer
- choice of fuel effect
- overbed illumination system
- hot ash effect fuel bed
- optional remote control

refer to pages 44 - 45 for the full list of options



shown in satin stainless

evoflame®
technology

for technical specifications please refer to page 47



shown in polished chrome



fusion

- **evoflame®** effect
- 1 & 2kW heat outputs
- optional stainless steel spacer
- choice of fuel effect
- overbed illumination system
- hot ash effect fuel bed
- optional remote control
- available in black, polished chrome satin stainless.

refer to page 44 - 45 for the full list of options

evoflame®
technology

shown in satin chrome

for technical specifications please refer to page 47

harlem

- **evoflame®** or LED effect
- 1 & 2kW heat outputs
- optional stainless steel spacer
- choice of fuel effect
- overbed illumination system
- hot ash effect fuel bed
- optional remote control

refer to pages 44 - 45 for the full list of options



shown in polished chrome

evoflame®
technology

for technical specifications please refer to page 47



shown in satin stainless



albany

- evoflame® effect
- 1 & 2kW heat outputs
- choice of fuel effect

refer to page 44 - 45 for the full list of options

evoflame®
technology

polished chrome finish

for technical specifications please refer to page 47

phantom

- **evoflame®** or LED effect
- 1 & 2 kW heat output
- choice of fuel effect

refer to pages 44 - 45 for the full list of options



shown in satin brass



shown in satin black

evoflame®
technology

for technical specifications please refer to page 47



shown in satin chrome with **evoflame®** effect



shown in brass

seraph

- **evoflame®** or LED effect
- 1 & 2kW heat output
- choice of fuel effect

refer to pages 44 - 45 for the full list of options



shown in satin chrome



shown in polished chrome

for technical specifications please refer to page 47

saphir

- evo flame® or LED effect
- 1 & 2kW heat output
- choice of fuel effect

refer to pages 44 - 45 for the full list of options



shown in satin stainless



shown in brass

for technical specifications please refer to page 47



shown with polished chrome trim and fret

amathus

- evo flame® or LED effect
- 1 & 2kW heat output
- choice of fuel effect

refer to pages 44 - 45 for the full list of options



shown in brass



shown in black



shown in satin stainless

for technical specifications please refer to page 47

tiago

- **evoflame®** or **LED** effect
- 1 & 2kW heat output
- choice of fuel effect

refer to pages 44 - 45 for the full list of options



shown in brass with
evoflame® effect



shown in black

for technical specifications please refer to page 47



shown in chrome



shown with brass trim and fret

casal

- **evoflame®** or **LED** effect
- 1 & 2kW heat output
- choice of fuel effect

refer to pages 44 - 45 for the full list of options



shown in black



shown in polished chrome



shown in satin stainless

for technical specifications please refer to page 47

londa

- **evoflame®** or LED effect
- 1 & 2kW heat output
- insets in to a standard 16" x 22" fireplace opening
- wall mounted or inset

refer to pages 44 - 45 for the full list of options



shown with mirror fascia
and **evoflame®** effect



shown with stone effect

for technical specifications please refer to page 47



shown with gloss black fascia and **evoflame®** effect



evoflame®
technology

shown with solid oak fascia

scala

- **evoflame®** or **LED** effect
- 1 & 2kW heat outputs
- choice of fuel effect
- overbed illumination system
- hot ash effect fuel bed
- wall mounted or inset

refer to pages 44 - 45 for the full list of options



shown with gloss black fascia



shown with stone effect fascia

for technical specifications please refer to page 47

kepler 22

- evoflame® effect
- 1 & 2kW heat outputs
- ceramic log set
- overbed illumination system
- hot ash effect fuel bed
- two tone chrome frame & fret

refer to pages 44 - 45 for the full list of options

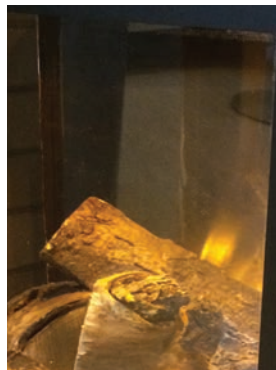


side mounted switch controls

evoflame®
technology

for technical specifications please refer to page 47





banff3

- **evoflame®** effect
- 1 & 2kW heat outputs
- glass fronted
- full steel construction
- hot ash effect fuel bed
- continental log set
- colour options of black or cream

refer to page 44 - 45 for the full list of options

evoflame®
technology

for technical specifications please refer to page 47



e-touch

fc **e-touch®** allows complete controllability of any floor or wall mounted suite product.

The control system is a fully portable, rechargeable bluetooth based touch screen unit, featuring a built-in thermostat enabling you to regulate and maintain the selected room temperature with ease.

each suite comes with choice of hand painted ceramic silver birch or woodland log set.



silver birch log set



woodland log set



colour options

fires info

All **evonicfires** are manufactured here in the UK. They provide a 1 or 2kW heat setting as standard and the flame effect can even be used independently of the heater, and uses low energy LED modules for a lower energy consumption.

Ask your retailer for guidance should you require any further details.

LED effect

standard features



LED's



1kW or 2kW heater



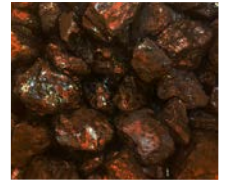
IEC plug connector



thermostat

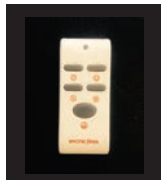


white pebbles



coal set

optional features



remote control
(dimmer function not available on LED effect)



50 or 75mm spacer



60mm spacer in
satin stainless
(brooklyn and harlem)



log & pebble set



log set

fc **evoflame®** effect gives the impression of a deep and rich flame picture with a hot ash effect vermiculite fuel bed via its unique reflectivity. The flame picture which is produced using LED's can provide up to 50,000 hours of running time. It is fully adjustable through the high and low settings when using the optional remote control.



standard features



LED's



1 kW or 2kW heater



kettle plug connector



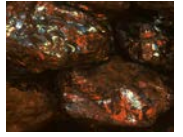
thermostat



overbed illumination



beech pebble



coals

optional features



remote control



50 or 75mm spacer



60mm spacer in
satin stainless
(brooklyn and harlem)



log & pebble set



logs

technical specification table

page no.	product	evoflame®	heat output	controls	length	height	depth
3	asterix	✓	l and 2kW	e-touch®	l 156mm	l 705mm	428mm
4	sigma	✓	l and 2kW	e-touch®	l 156mm	l 705mm	473mm
5	omega	✓	l and 2kW	e-touch®	l 500mm	900mm	380mm
6	helios	✓	l and 2kW	e-touch®	l 370mm	640mm	380mm
7	nimbus	✓	l and 2kW	e-touch®	l 280mm	520mm	255mm
8	qube	✓	l and 2kW	e-touch®	l 055mm	620mm	275mm
9	newark 2	✓	l and 2kW	e-touch®	l 120mm	520mm	365mm
10	newark 1000	✓	l and 2kW	e-touch®	l 500mm	520mm	365mm
11	compton 1000	✓	l and 2kW	e-touch®	l 500mm	520mm	365mm
12	compton 2	✓	l and 2kW	e-touch®	l 120mm	520mm	365mm
13	empire 2	✓	l and 2kW	e-touch®	l 120mm	520mm	280mm
14	cassini	✓	l and 2kW	e-touch®	l 297mm	l 167mm	406mm
15	corbiere	✓	l and 2kW	e-touch®	l 370mm	l 095mm	355mm
16	midori	✓	l and 2kW	e-touch®	530mm	620mm	320mm
17	ohio 600	✓	l and 2kW	e-touch®	l 116mm	791mm	256mm
18	ohio 700	✓	l and 2kW	e-touch®	l 178mm	616mm	291mm
19	ohio 1000	✓	l and 2kW	e-touch®	l 479mm	614mm	291mm
20	broadway	✓	l and 2kW	e-touch®	l 500mm	520mm	365mm
21	westfield	✓	l and 2kW	e-touch®	860mm	625mm	280mm

page no.	product	flame effect		heat output	controls	total height	total width	total depth	inset height	inset width	inset depth
		LED	evoflame®								
22	staton	X	✓	1500W & 750W	switch or remote	615mm	505mm	200mm	550mm	382mm	75mm
23	detroit	X	✓	1500W & 750W	switch or remote	590mm	460mm	180mm	550mm	382mm	75mm
24	memphis	X	✓	1500W & 750W	switch or remote	615mm	515mm	200mm	550mm	382mm	75mm
25	nebraska	X	✓	1500W & 750W	switch or remote	605mm	495mm	200mm	550mm	382mm	75mm
26	colorado	X	✓	1500W & 750W	switch or remote	605mm	460mm	130mm	550mm	382mm	75mm
27	kansas	X	✓	1500W & 750W	switch or remote	615mm	515mm	200mm	550mm	382mm	75mm
28	iowa	X	✓	1500W & 750W	switch or remote	605mm	490mm	130mm	550mm	382mm	60mm
29	brooklyn	✓	✓	1 & 2kW	switch or remote	605mm	490mm	130mm	550mm	382mm	60mm
30	fusion	X	✓	1 & 2kW	switch or remote	605mm	490mm	155mm	550mm	382mm	60mm
31	harlem	✓	✓	1 & 2kW	switch or remote	605mm	490mm	130mm	550mm	382mm	60mm
32	albany	X	✓	1 & 2kW	switch or remote	602mm	506mm	210mm	550mm	382mm	75mm
33	phantom	✓	✓	1 & 2kW	switch or remote	602mm	506mm	105mm	550mm	382mm	75mm
34	seraph	✓	✓	1 & 2kW	switch or remote	602mm	506mm	105mm	550mm	382mm	75mm
35	saphir	✓	✓	1 & 2kW	switch or remote	602mm	506mm	105mm	550mm	382mm	75mm
36	amathus	✓	✓	1 & 2kW	switch or remote	602mm	506mm	105mm	550mm	382mm	75mm
37	tiago	✓	✓	1 & 2kW	switch or remote	602mm	506mm	105mm	550mm	382mm	75mm
38	casal	✓	✓	1 & 2kW	switch or remote	612mm	495mm	90mm	550mm	382mm	75mm
39	londa	✓	✓	1 & 2kW	switch or remote	590mm	590mm	145mm	550mm	382mm	85mm
40	scala	✓	✓	1 & 2kW	switch or remote	585mm	855mm	155mm	540mm	540mm	85mm
41	kepler22	X	✓	1500W & 750W	switch or remote	605mm	645mm	135mm	550mm	382mm	75mm
42	banff3	X	✓	1 & 2kW	switch or remote	671mm	460mm	355mm	n/a	n/a	n/a



electric fires available exclusively through independent fireplace showrooms

At CK Fires our policy is one of constant development and improvement. All products are protected by patents, registered design or intellectual property rights, which will be protected by CK Fires. All specifications are correct at the time of publishing but are subject to change without notice.

evonicfires

clifford park, clifford lane, stratford-upon-avon cv37 8hw

tel: +44 (0) 1789 263868 | fax: +44 (0) 1789 293080

email: sales@evonicfires.co.uk | website: www.evonicfires.co.uk |  twitter [@evonicfires](https://twitter.com/evonicfires)